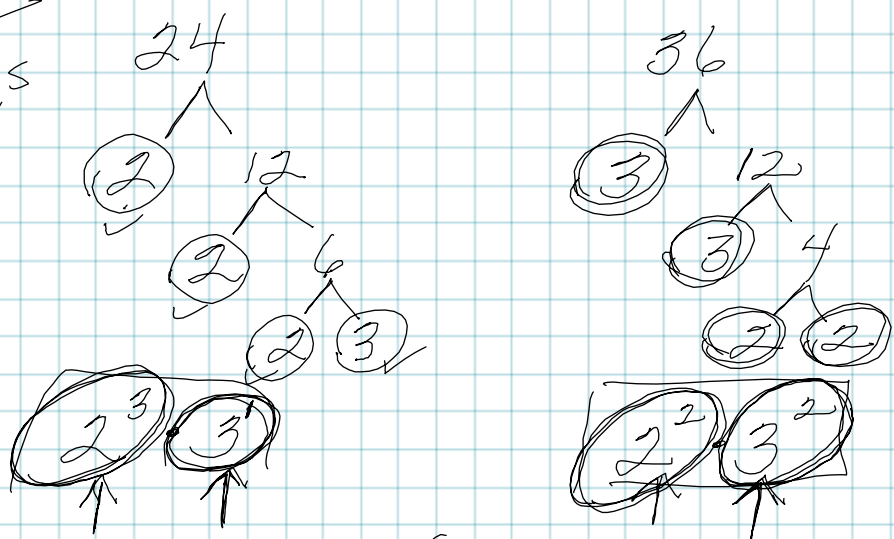


* Find the greatest common factor of 24 and 36.

Listing
Factors of 24 → 1, 2, 3, 4, 6, 8, 12, 24
Factors of 36 → 1, 2, 3, 4, 6, 9, 12, 18, 36

12 is the GCF of 24 & 36

New Method
Prime Factorizations



What is the most # of _____ they have in common?

$2^2 \cdot 3$ → 12 GCF