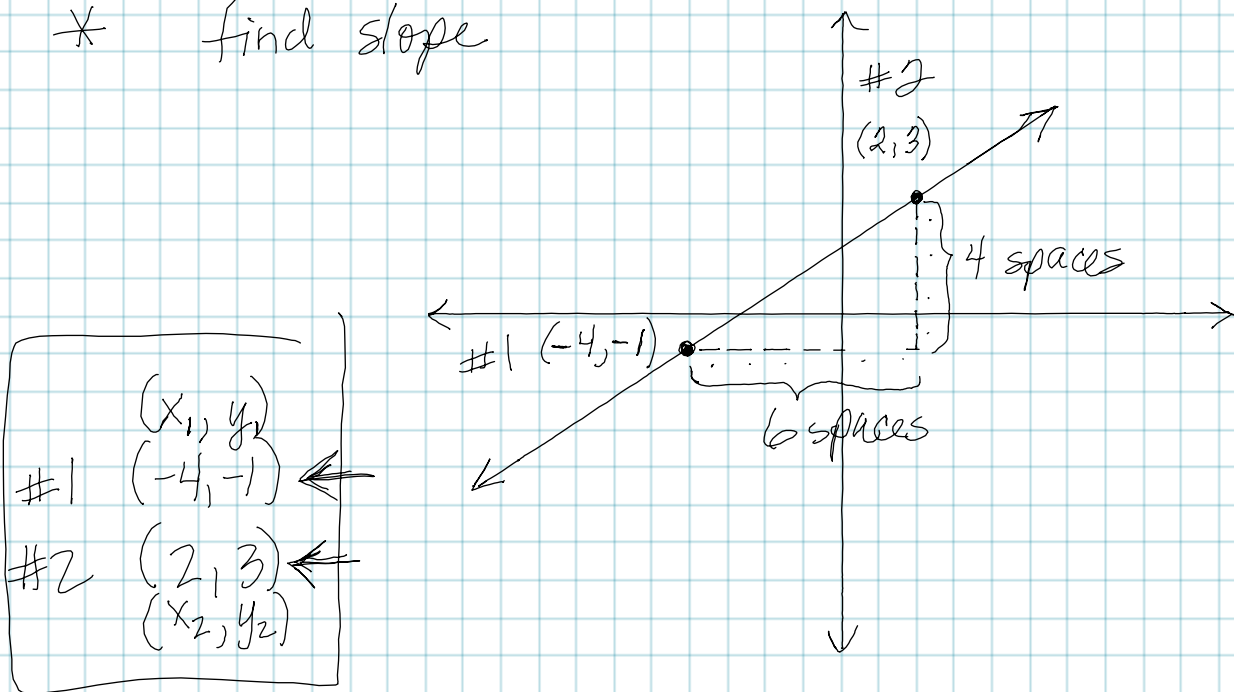


* find slope



$$\text{slope} = \frac{\text{rise}}{\text{run}} = \frac{\text{vertical distance}}{\text{horizontal distance}} = \frac{4}{6} = \boxed{\frac{2}{3}}$$

$$\text{slope} = \frac{\text{rise}}{\text{run}} = \frac{y_1 - y_2}{x_1 - x_2} = \frac{-1 - 3}{-4 - 2} = \frac{-4}{-6} = \boxed{\frac{2}{3}}$$

$$\text{slope} = \frac{y_2 - y_1}{x_2 - x_1} = \frac{3 - (-1)}{2 - (-4)} = \frac{4}{6} = \boxed{\frac{2}{3}}$$

$$\text{slope} = \frac{y_2 - y_1}{x_1 - x_2} = \frac{3 - (-1)}{-4 - 2} = \frac{4}{-6} = -\frac{2}{3}$$