

* Solve $3x + 2y = 12$
there are an infinite number of solutions

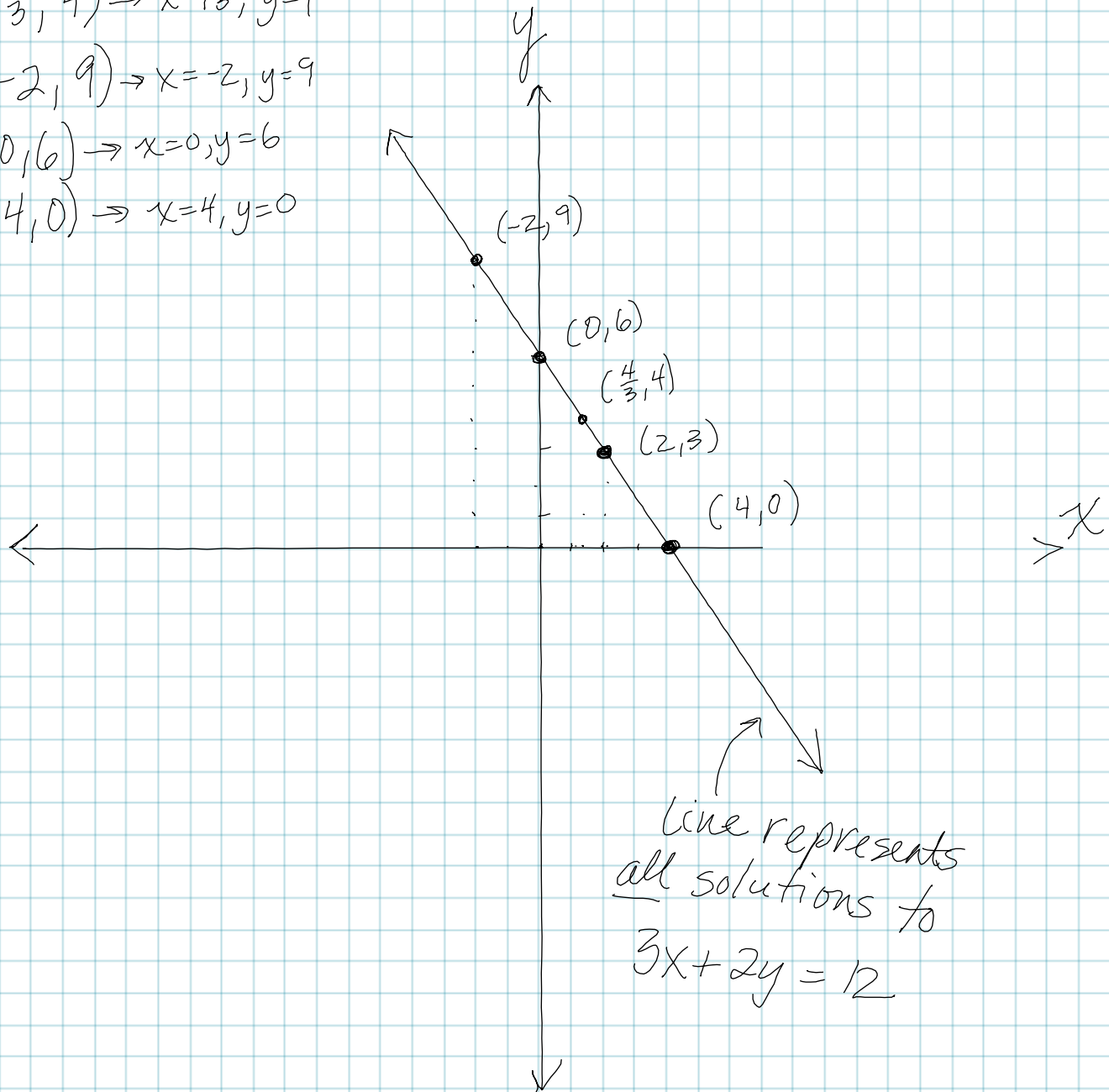
$$(2, 3) \rightarrow x=2, y=3$$

$$\left(\frac{4}{3}, 4\right) \rightarrow x=1\frac{1}{3}, y=4$$

$$(-2, 9) \rightarrow x=-2, y=9$$

$$(0, 6) \rightarrow x=0, y=6$$

$$(4, 0) \rightarrow x=4, y=0$$



Graph $3x + 2y = 12$
(means draw a picture of the solutions)