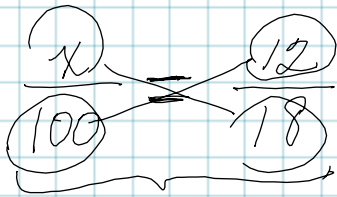


* What percent of 18 (is) 12?



$$18x = 12(100)$$

$$\frac{18x}{18} = \frac{1200}{18}$$

$$\rightarrow x = 66\frac{2}{3}$$

$$66\frac{2}{3}\%$$

$$\begin{array}{r} 4 \quad 66\frac{12}{18} \\ 18 \overline{)1200} \\ \underline{-108} \downarrow \\ 120 \\ \underline{-108} \\ (12) \end{array}$$

$$66\frac{\frac{12}{18}}{3} = 66\frac{2}{3}$$

$$\frac{x \cdot 18}{18} = \frac{12}{18}$$

$$x = \frac{2}{3}$$

convert $\frac{2}{3}$ to a percent

$$\frac{2}{3} (100\%)$$

$$\frac{2}{3} = \frac{100 \cdot \%}{1} \downarrow$$
$$\frac{200}{3} \%$$

$$66\frac{2}{3}\%$$

$$\begin{array}{r} 3 \overline{)1200} \\ \underline{-18} \downarrow \\ 20 \\ \underline{-18} \\ (2) \end{array}$$